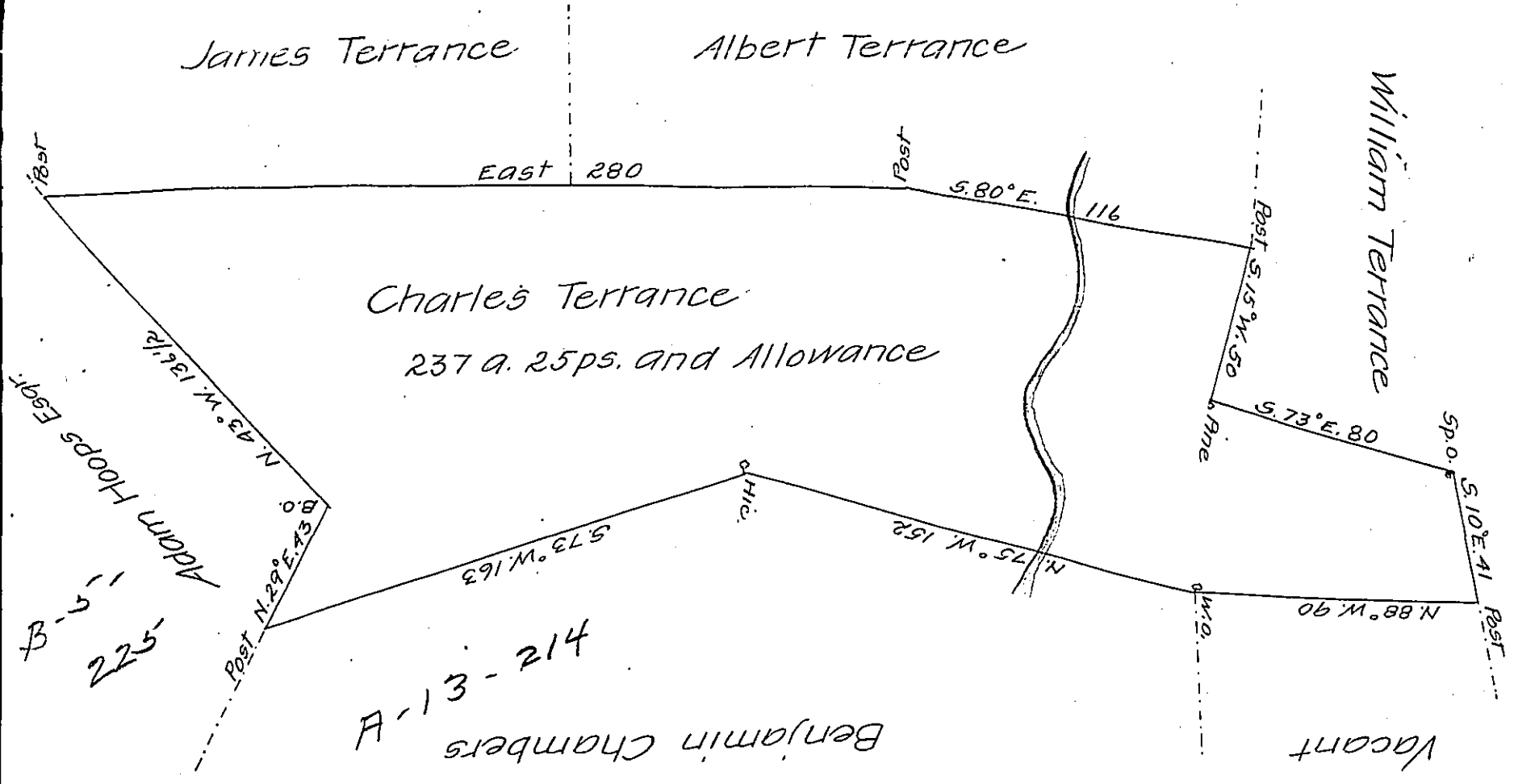


C 232 - 221

A-40-87



A Draught of a Tract of Land Situate in Letterkenny Town-
 ship Cumberland County containing Two hundred Thirty seven acres
 and twenty-five perches and allowance of six acres pCent for Roads
 &c. Survey'd for Charles Terrance the 18th Day of April 1768 in pur-
 suance of an Order of Survey Dated March 18th 1767 No. 3083 3083

John Armstrong D.S.

To John Lukens Esqr. }
 Surveyor General }

IN TESTIMONY that the above is a copy of the original remaining on file in
 the Department of Internal Affairs of Pennsylvania, made
 conformably to an Act of Assembly approved the 16th day of
 February 1833, I have hereunto set my hand and caused
 the Seal of said Department to be affixed at Harrisburg,
 this second day of April 1907

Leao P. Brown
 Secretary of Internal Affairs.